

# SIS-1

## INFRASOUND SENSOR

- COMPACT
- CHAINABLE
- LOW POWER
- LOW COST



SIS-1 is a rugged-field infrasonic sensor, ideal for portable systems, remote sites or in addition to a seismic station. With the small size and weight, SIS-1 is easily deployable and provides reliable infrasonic signal over a wide frequency bandwidth.

### SENSOR SPECIFICATIONS

Full scale range +/- 575 Pa

Frequency bandwidth @ -3dB 0.063Hz to 50 Hz

Nominal sensitivity 3.2 +/- 0.5 mV/Pa

Phase tolerance @ 0.1Hz +/- 14 deg (can be reduced to +/- 1.5 deg at 0.1Hz on demand)

Self Noise Lower than LNM < 1 Hz (refer to figure 1)

Output Output type: differential  
Output load: 2 x 50 Ω

### POWER REQUIREMENTS

Voltage 3V to 20 V

Power consumption < 5 mA under 12V

Mating connector CAEN3C8F040DF

Polarity protection up to 20V

### PHYSICAL CHARACTERISTICS

Diameter 156 mm

Height 67 mm

Weight 850 gr

Operating temperature -20°C to +60°C

#### VOLCANOLOGY



#### METEOROLOGY

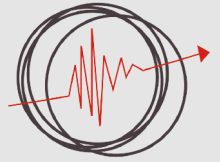


#### CIVIL SECURITY

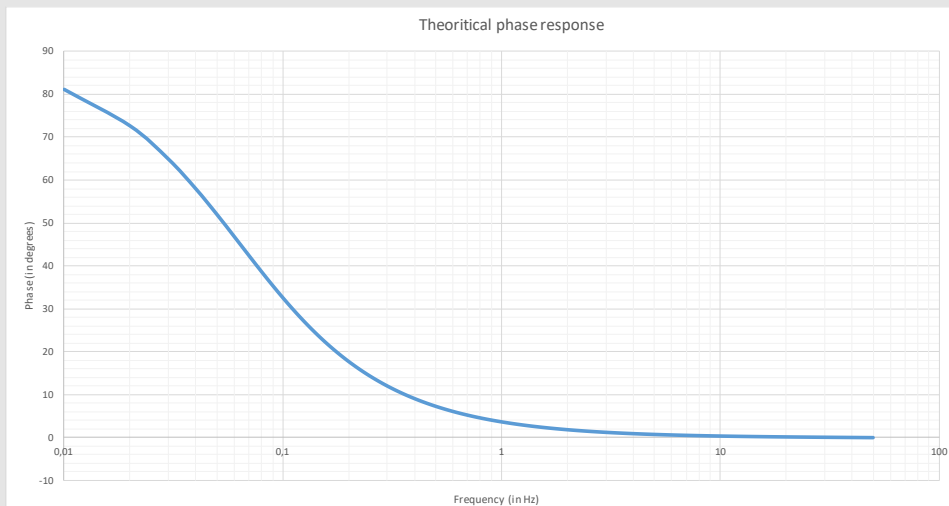
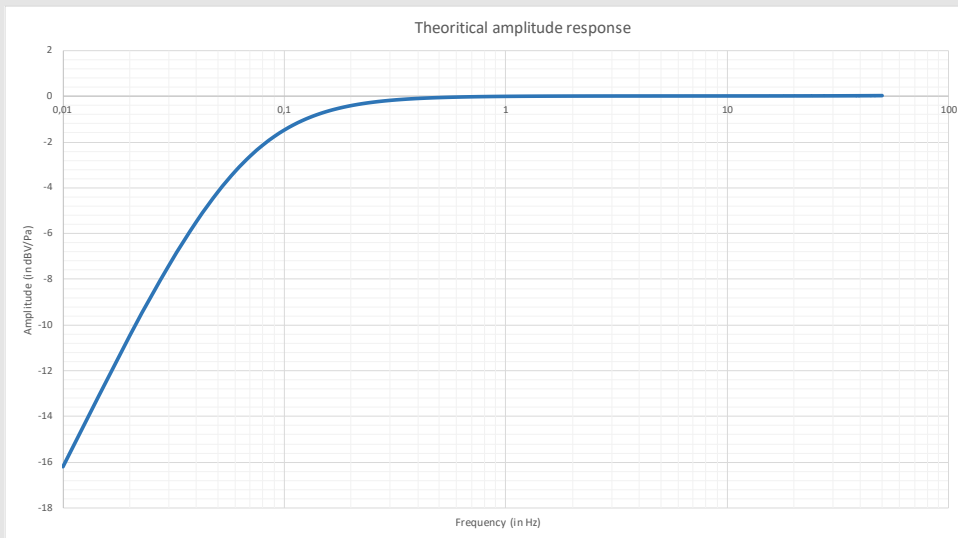


#### MILITARY SECURITY

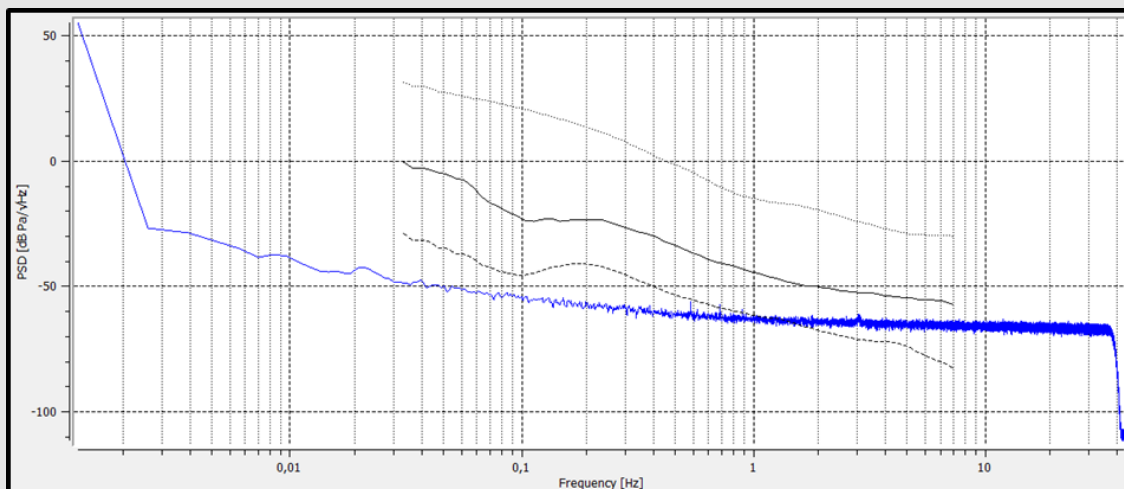




## SENSOR SENSITIVITY RESPONSE



## SENSOR SELF-NOISE



*In the interests of continual improvement with respect to design, reliability, function or otherwise, all product specifications and data are subject to change without prior notice.*